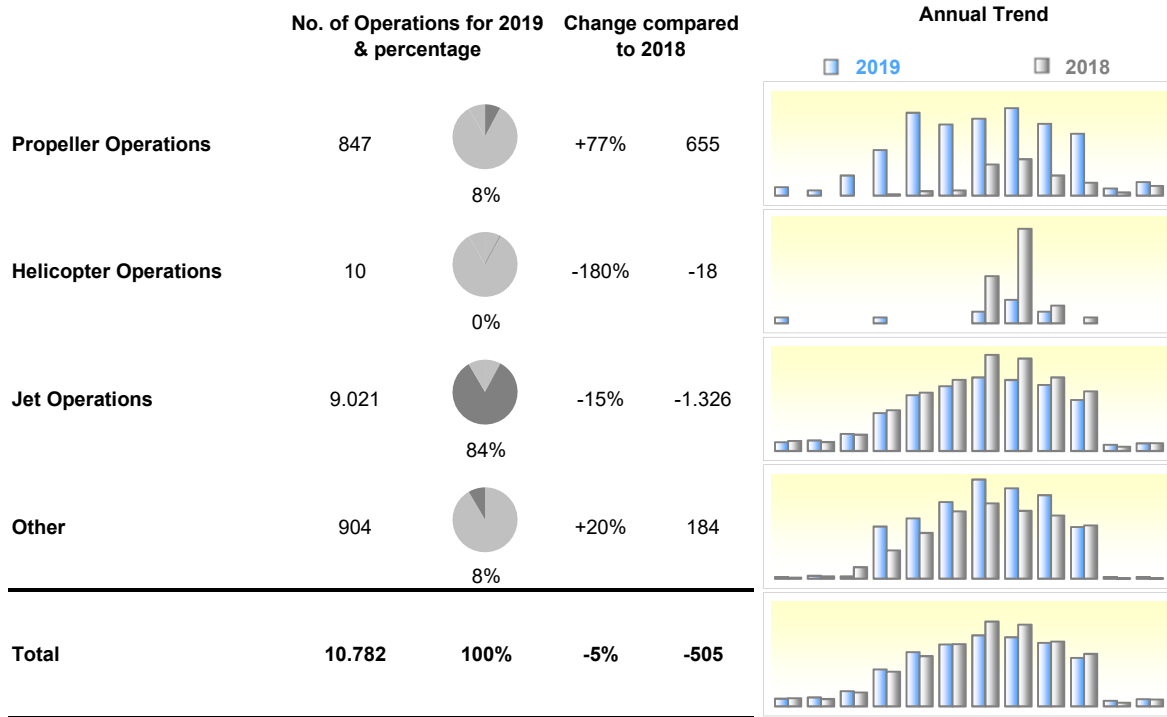


Overview - 2019

Dubrovnik Airport

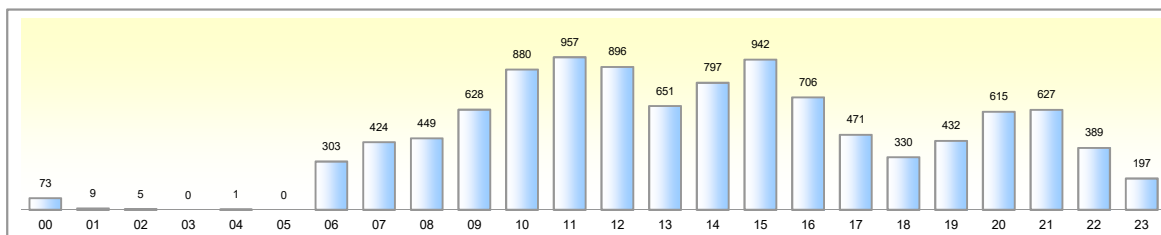
Operations by Aircraft Category



Top 10 Commercial Carriers - 2019



Operations by Hour - 2019



Operations by Aircraft Category - 2019 & 2018

Dubrovnik Airport

Oper	Aircraft Cat	Commercial Jet	Helicopter	Propeller	Regional Jet	Turboprop	Unknown	Total
Year	Business Jet							
2018	173	10713	28	17	155	175	26	11287
1	1	196						197
2	3	174						177
3	5	328						333
4	12	818				2		832
5	5	1170		1	18	6	4	1204
6	8	1444			25	8	4	1489
7	45	1876	8	6	44	42	9	2030
8	60	1791	16	7	32	49	5	1960
9	24	1472	3	2	21	29	1	1552
11		84				5		89
10	6	1212	1		14	20	3	1256
12	4	148		1	1	14		168
2019	77	9675	10	7	168	840	5	10782
1	1	171	1			13		186
2	3	202			1	8	1	215
3	5	326			1	31		363
4	7	794	1		14	70	2	888
5	10	1147		1	16	126		1300
6	15	1331		1	27	108	2	1484
7	5	1560	2	2	17	116		1702
8	19	1470	4		28	134		1655
9	12	1367	2	2	29	108		1520
11		116			8	11		135
10		1041		1	27	94		1163
12		150				21		171

Operations by Hour - 2019

Dubrovnik Airport

Oper Year	Hour	Operation Type			Total	
		A	D	T		
2019	0		62	11	73	
	1		8	1	9	
	2		5		5	
	4		1		1	
	6		65	238	303	
	7		264	160	424	
	8		315	134	449	
	9		415	213	628	
	10		618	262	880	
	11		461	495	1	957
	12		513	383		896
	13		262	389		651
	14		625	172		797
	15		505	437		942
	16		383	323		706
	17		294	176	1	471
	18		163	167		330
	19		314	118		432
	20		411	204		615
	21		344	283		627
	22		250	139		389
	23		148	49		197
	Total			6426	4354	2

Aircraft Category by Hour - 2019

Dubrovnik Airport

Oper Year	Aircraft Category							Total
	Business Jet	Commercial Jet	Helicopter	Propeller	Regional Jet	Turboprop	Unknown	
2019	77	9675	10	7	168	840	5	10782
1	1	171	1			13		186
2	3	202			1	8	1	215
3	5	326			1	31		363
4	7	794	1		14	70	2	888
5	10	1147		1	16	126		1300
6	15	1331		1	27	108	2	1484
7	5	1560	2	2	17	116		1702
8	19	1470	4		28	134		1655
9	12	1367	2	2	29	108		1520
10		1041		1	27	94		1163
12		150				21		171
11		116			8	11		135

Operator Category by Hour - 2019

Dubrovnik Airport

Oper Year	Operator Category						Total
	Airline	Cargo	Fractional	Military	Unknown		
2019		8517	4	8	2	2251	10782
0		73					73
1		8				1	9
2		5					5
4						1	1
6		293				10	303
7		328			1	95	424
8		286				163	449
9		440	1	1		186	628
10		669				211	880
11		757	1			199	957
12		711		1		184	896
13		493		1		157	651
14		616		3		178	797
15		799	1	1	1	140	942
16		629				77	706
17		400	1	1		69	471
18		247				83	330
19		313				119	432
20		423				192	615
21		497				130	627
22		343				46	389
23		187				10	197

Aircraft Category by Airline - 2019

Dubrovnik Airport

Oper Year	Aircraft Category							Total
	Business Jet	Commercial Jet	Helicopter	Propeller	Regional Jet	Turboprop	Unknown	
2019	77	9675	10	7	168	840	5	10782
TRA		127						127
AAB		1						1
ADH		2						2
ADN	1					1		2
ADR		8						8
AEA		1						1
AEE		394						394
AFL		2						2
AFR		68						68
AHO	5							5
AMB							2	2
AMC		5						5
ART		2						2
ASL		50				11		61
ATV		1						1
AUA		254			8			262
AWC		1						1
AWT		4						4
AXE		7						7
AXG					1			1
AXY					1			1
AZA		18			8			26
BAW		521			1			522
BEL		136						136
BER		157						157
BGF	2							2
BLX		1						1
BMS		7						7
BOE		39						39
BRU		1						1
BTI		1						1
BUC		1						1
BUR		1						1
CAI		3						3
CFG		75						75
CLX		1						1
CND		2						2

Aircraft Category by Airline - 2019

Dubrovnik Airport

CSA		95		95
CTN		1910	786	2696
DAL		2		2
DLH		430	4	434
DUK	3			3
EFD	1			1
EIN		307		307
ELB		1		1
ELY		11		11
ENT		35		35
ERN		2		2
EWG		107		107
EXS		387		387
EZS		56		56
EZY		890		890
FCB	1			1
FCM			2	2
FDB		13		13
FDX		1		1
FFD		1		1
FHY		17		17
FIN		161	4	165
GAC	1			1
GSW		2		2
GWI		81		81
HAT		1		1
IBE		260		260
IBK		329		329
IBS		12		12
INS	1			1
JAF		33	36	69
JCL	1			1
JSY	4			4
JTG		12		12
KLM		12		12
KLJ			1	1
KQA		1		1
KRP		1		1
LAV		1		1
LDM	1			1
LGL		4	26	30

Aircraft Category by Airline - 2019

Dubrovnik Airport

LLX			1		1
LNX	3				3
LOT				87	87
LZB		1			1
MEA		3			3
MGX		7		11	18
MJF	1				1
MLD		1			1
MSC		1			1
MSR		9			9
MSX		2			2
MVI		1			1
MYX		7			7
NAX		451			451
NOS		2			2
NTF				1	1
NJE	7				7
OAL				1	1
OHY		4			4
OTF		1			1
PAC		1			1
PGT		5			5
PNC	1				1
PR2	1				1
QAF		1			1
QNR	1				1
QTR		5			5
RAM		1			1
RJA		2			2
ROT		1			1
ROU		2			2
RYR	1	160			161
SAS		231			231
SCW		1			1
SCX		2			2
SQC		1			1
SSG		2			2
SVA		2			2
SVW				1	1
SWG		52			52
SWR	1	64			66

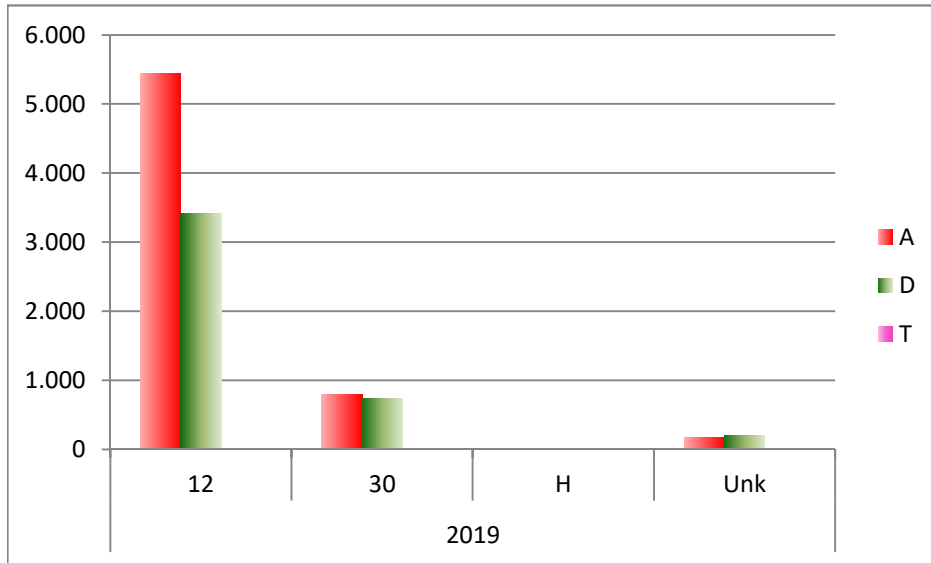
Aircraft Category by Airline - 2019

Dubrovnik Airport

SXS		2						2
TAE		1						1
TCF					1			1
TCX		29						29
THY		372						372
TIE	1							1
TOM		268						268
TSC		29						29
TTJ	1							1
TUI		12						12
TVF		101						101
TVS	2	134						136
TYW	1	1						2
UAE		6						6
UKL						1		1
Unk	28	234	10	6	1	13	1	293
VJT	6	1			1			8
VKG		2						2
VLG		347						347
VOE		18					1	19
WZZ		29						29
YYY	1							1

Operations by Runway - 2019

Dubrovnik Airport



Oper Year	Runway	A/D			Total
		A	D	T	
2019	12	5,447	3,409	2	8,858
	30	799	742		1,541
	H	8	1		9
	Unk	172	202		374
Total		6,426	4,354	2	10,782